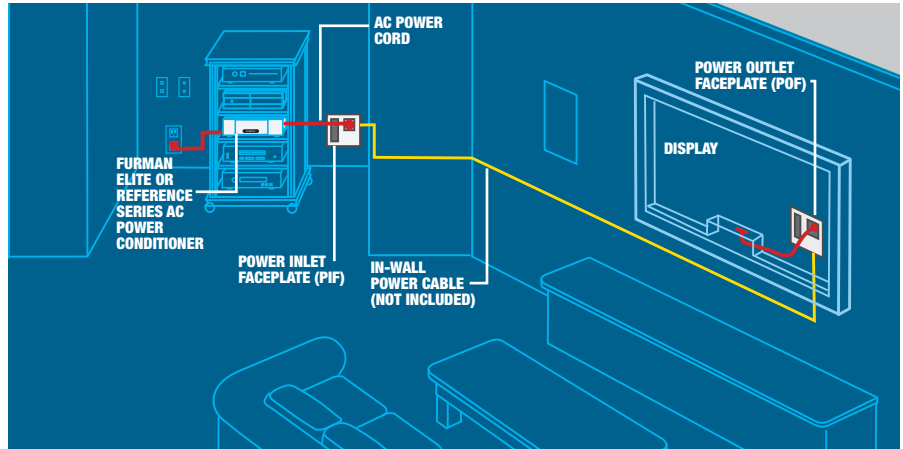


# FURMAN

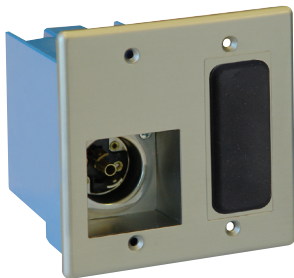
## POWERKIT-TL IN-WALL REMOTE POWER SOLUTION

### THE PERFECT POWER DELIVERY SOLUTION

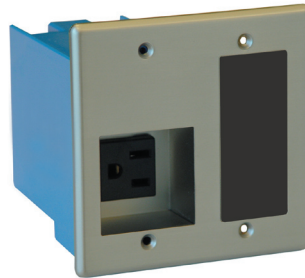
The combination of any Furman Elite or Reference Series AC Power Conditioner and PowerKit-TL provides the perfect solution for delivering clean, pure power while providing a single ground reference to eliminate the rolling hum bars and buzz created by ground loops. The PowerKit-TL is ideally suited for plasmas, ceiling projectors, LCD screens or any other equipment remotely located from the main equipment rack. With the PowerKit-TL, remotely located equipment can utilize the benefits of Furman's AC power management products using a listing agency approved, code compliant solution in a discreet manner that meets the customer's aesthetic expectations.



### KIT INCLUDES:



- 1 POWER INLET FACEPLATE (PIF)**
- Recessed AC power inlet (twistlock)
  - Removable panel for signal module (module not included)
  - Retrofit style J-box (see manual for new construction adaptation) and mounting screws



- 1 POWER OUTLET FACEPLATE (POF)**
- Recessed AC power outlet (Edison 15A)
  - Removable panel for signal module (module not included)
  - Retrofit style J-box (see manual for new construction adaptation) and mounting screws



- 1 AC POWER CORD (TWISTLOCK)**
- For connection to Furman AC power conditioner*
- 12 ft. length
  - Shielded against RFI/EMI noise
  - 12 gauge OFC conductors



- 1 AC POWER CORD (IEC)**
- For connection to most flat screen displays and projectors*
- 2 ft. length
  - Shielded against RFI/EMI noise

### POWERKIT-TL SPECIFICATIONS

#### Power Inlet Faceplate:

AC Connector: NEMA ML-2P

#### Power Outlet Faceplate:

AC Connector: NEMA 5-15R Receptacle

#### AC Power Cords:

(1) 12 foot, NEMA 5-15P and ML-2R

(1) 2 foot, NEMA 5-15P and IEC C-13 female

### Engineered in the USA

Furman Sound, LLC • 1690 Corporate Circle • Petaluma, CA. 94954 USA  
Phone: (707) 763-1010 • Fax: (707) 763-1310 • [www.FurmanSound.com](http://www.FurmanSound.com)